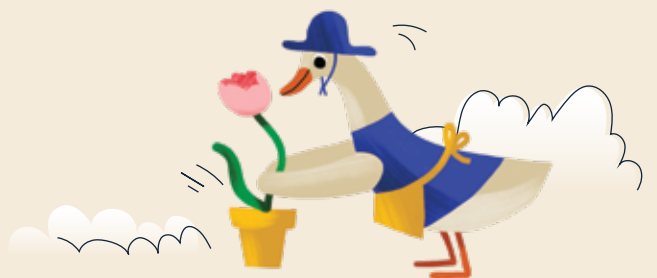


OAK GROVE

CLYDE NORTH

Landscape Packages



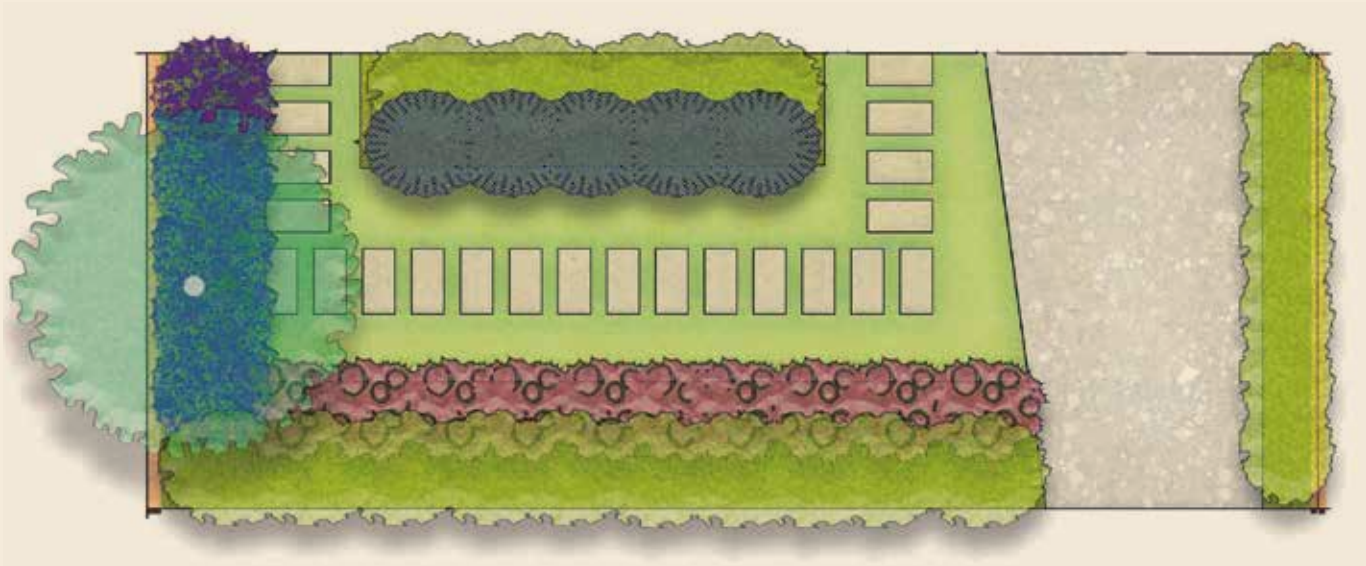
To ensure that high landscaping standards are maintained throughout the community, Oak Grove will provide you with a garden you can enjoy and be proud of. The Oak Grove Landscape Team has designed four beautiful gardens and, after you have met the special conditions, the chosen garden will be installed when your home is completed.

Whether you are looking for something low-maintenance, a garden of more contemporary style or one that represents Australia's native landscape, we have a design to match your new home and your lifestyle.



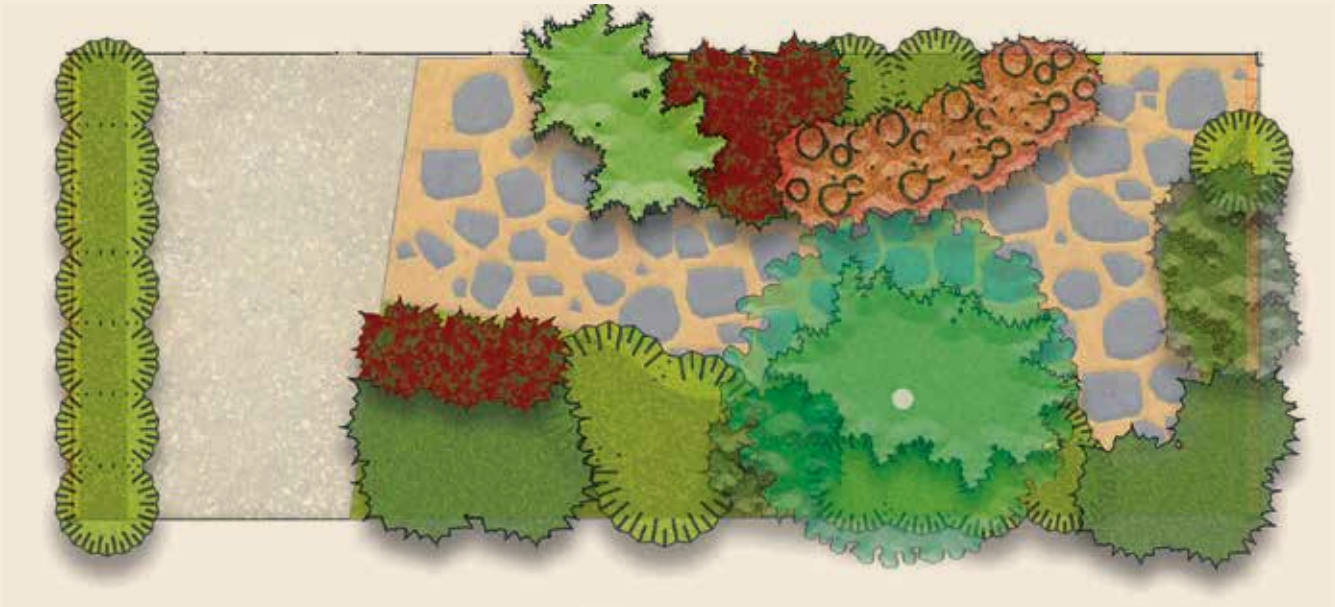
Formal Garden

Neatly arranged hedges, blocks of flowering species and a classic, low-maintenance design, the Formal Garden provides a geometric and structured planting arrangement that will provide happiness for those looking for ‘order’ within their garden.



Native Garden

Referencing endemic and indigenous species, the informal Native Garden exudes a relaxed and effortless space. Seasonal native flowering species attract local birdlife, while permeable gravel paths ensure a low-maintenance and water-sensitive garden.



English Box
Buxus sempervirens



Showy Stonecrop
Hylotelephium spectabile
'Autumn Joy'



English Lavender
Lavandula angustifolia



'Seafoam' Statice
Limonium perezii Blue



Callery Pear
Pyrus calleryana



Tall Kangaroo Paw
Anigozanthos flavidus



White Correa
Correa alba



Creeping Boobialla
Myoporum parvifolium



Tussock Grass
Poa labillardieri



Coast Banksia
Banksia integrifolia



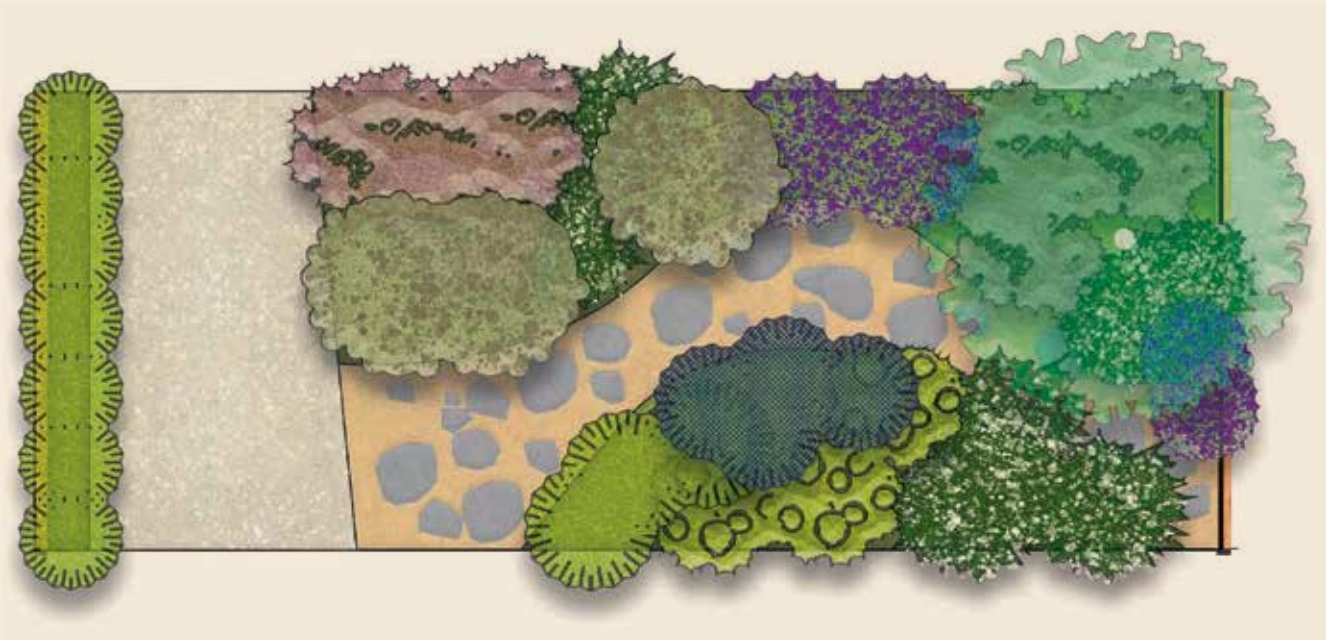
Bottlebrush
Callistemon x viminalis
'Little John'



Spiny Mat Rush
Lomandra longifolia

Sensory Garden

Seasonal interest, tactile forms, bold colours, and scents of lemon and lavender will engage and hold your interest in the Sensory Garden. A central granitic path with steppers leads you through this delicately curated and therapeutic garden, serving as your own private calming space.



**Lindheimer's
Beeblossom**
Gaura lindheimeri



Rhododendron hybrid



English Lavender
Lavandula angustifolia



'Seafoam' Statice
Limonium perezii Blue



**Dwarf Lemon-scented
Gum**
Corymbia citriodora
'scentuous'



Mediterranean Spurge
Euphorbia characias
ssp. wulfenii



Chinese Fountain Grass
Pennisetum
alopecuroides



Mat Rush
Lomandra longifolia
'Lime Tuff'

Kitchen Garden

Boasting a varied and versatile array of edible plants and fruits, the Kitchen Garden will prove to be a reliable and sustainable addition to your home. Be it homegrown apples, fresh mint or fragrant bay leaves, the Kitchen Garden will complement any menu.



Welsh Onion
Allium fistulosum



Fresh Chives
Allium schoenoprasum



English Lavender
Lavandula angustifolia



Bay Laurel
Laurus nobilis



Spearmint
Mentha spicata



Basil
Ocimum basilicum



Flat-Leaved Parsley
Petroselinum crispum
'Neapolitanum'



Rosemary
Rosmarinus officinalis



Common Sage
Salvia officinalis



Cripps Pink
Malus domestica
'Pink Lady'

Frequently Asked Questions

Am I eligible for the front garden landscaping package?

All purchasers within the Oak Grove estate are currently eligible for the front garden landscaping package. For terms and conditions, please refer to your land contact of sale. Eligibility may change throughout the project, please check with agent at time of signing land contract.

When do I choose my preferred front garden landscaping package?

You can nominate which design you would prefer upon signing your land contract of sale. Final choice must be confirmed prior to land settlement.

When do I apply for the front garden landscaping package to be installed?

Prior to applying for a front garden landscaping package, you must have received your Certificate of Occupancy for your completed home. Once you’ve received this, request a Landscaping Request Form by emailing lotpackagesmelb@ldtotal.com.au

How can I apply for the landscape package?

Email lotpackagesmelb@ldtotal.com.au

Do I need to submit my certificate of occupancy?

Yes, you must submit a copy of your certificate of occupancy when you apply to have your front garden landscaping package installed. Your home must comply with all approved plans and Design Guidelines to be approved by the Oak Grove design review panel. Any non-compliance items must be rectified prior to landscaping works commencing.

Can I change my selected design closer to the time of installation?

Any request to change your selected front garden design must be submitted to lotpackages@ldtotal.com.au for consideration. Please ensure the team has ample time to review and consider your request.

Are modified designs accepted?

The front garden landscape designs provided by Oak Grove are a fixed package, however if amended or additional landscaping is requested, this can be considered at the purchaser’s cost.

When will Oak Grove deliver my front landscaping?

Once the Oak Grove Landscape Team has received your certificate of occupancy, and all other requirements are met, the commencement of front landscaping works is anticipated within three months. Seasonal conditions and the landscaper’s availability may affect this timeframe, however you will receive notification from our landscaping team to notify you when the front landscaping works will be completed.

How long will it take to construct my front garden?

Generally, works will be completed within one week. However weather, labour and materials availability may vary the construction timing in some cases.

Will my garden look exactly the same as the design in the Oak Grove landscape brochure or the example at the Oak Grove Sales Office?

The width, slope and layout of front yards at Oak Grove can vary quite significantly from lot to lot. Therefore, the designs may be adapted to fit the specific requirements of your lot. Also, there may at times be supply issues with some planting. Our team will offer the purchaser a suitable replacement.

Can we have artificial turf instead of natural grass in our front garden landscaping package?

Any request to change your front garden design to include artificial turf instead of natural turf must be submitted to lotpackagesmelb@ldtotal.com.au for consideration. Changes will be at the purchaser’s cost.

What about the driveway and fencing?

Driveway, fencing and other hardscapes are not included in the landscape packages. These works need to be completed by the builder prior to landscape works commencing.

Does my front yard need to be clear of rubbish?

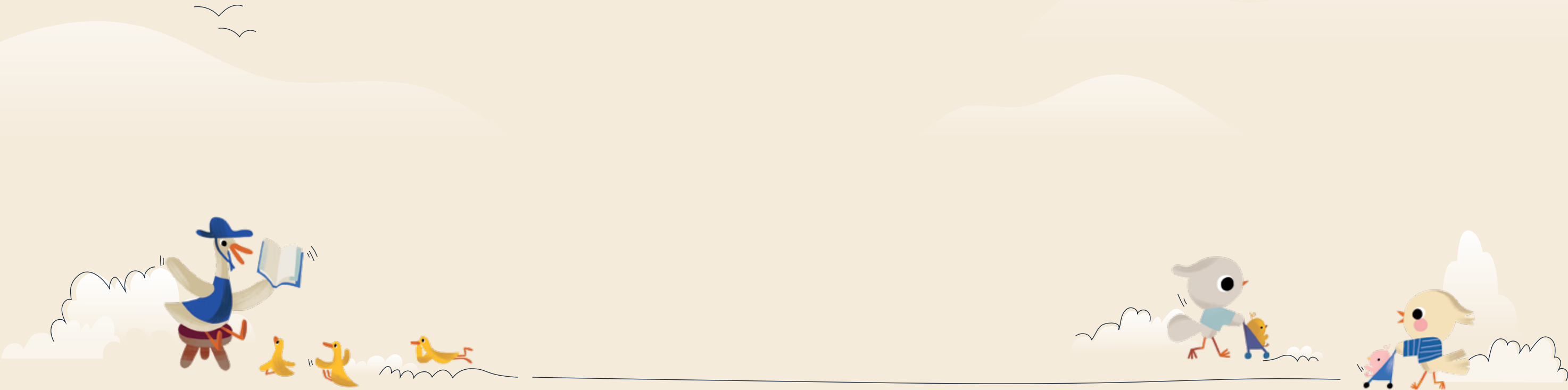
Yes, your front yard must be clear of rubbish, any building material, weeds, vegetation etc, prior to front landscaping works commencing on your lot.

A retaining wall is required on my property, will I need to complete this prior to works commencing?

Yes, any compliant retaining wall must be completed prior to the front landscaping works commencing.

Who maintains my front garden once it has been installed?

It is your responsibility to water and maintain your front garden once it has been installed. Our landscape team may issue the owner a notice to rectify or maintain your garden if it’s deemed unsuitable.



Notes

[illegible]

This is that place.

oakgrove@rpmgrp.com.au

0467 561 811

2125 Thompsons Road, Clyde North VIC 3978

OakGroveClydeNorth.com.au

RPM[®] Goldmate[™]

Disclaimer: Goldmate and RPM use their best endeavours to gather information in this presentation however, Goldmate and RPM cannot guarantee the information is true and accurate. Goldmate and RPM (and their related entities) accept no responsibilities and disclaim all liabilities in respect to errors or inaccuracies this presentation may contain. Potential purchasers should make their own inquiry to verify the information contained herein. All plans, images, illustration are depictions for presentation purpose only. The information does not constitute all or any part of an offer or Contract of Sale and is intended as a guide only.